



COMPLETED PROJECTS



MAURYA RESIDENCY



YAMUNA PARADISE



BHARGAVI GLORIA RESIDENCY

ONGOING PROJECTS



KUDVA'S GRANDEUR



MADHUBAN



EVANNA HOMES

Promoters & Builders:



For Booking Contact:



Suprabhath Building, 2nd Floor
Bejai Kapikad Road, Mangalore-3
E-mail: info@nirmaanhomes.com

Consultants:

NAYAK PAI & ASSOCIATES
ARCHITECTS . ENGINEERS . INTERIOR DESIGNERS
Car Street, Mangalore - 575 001.

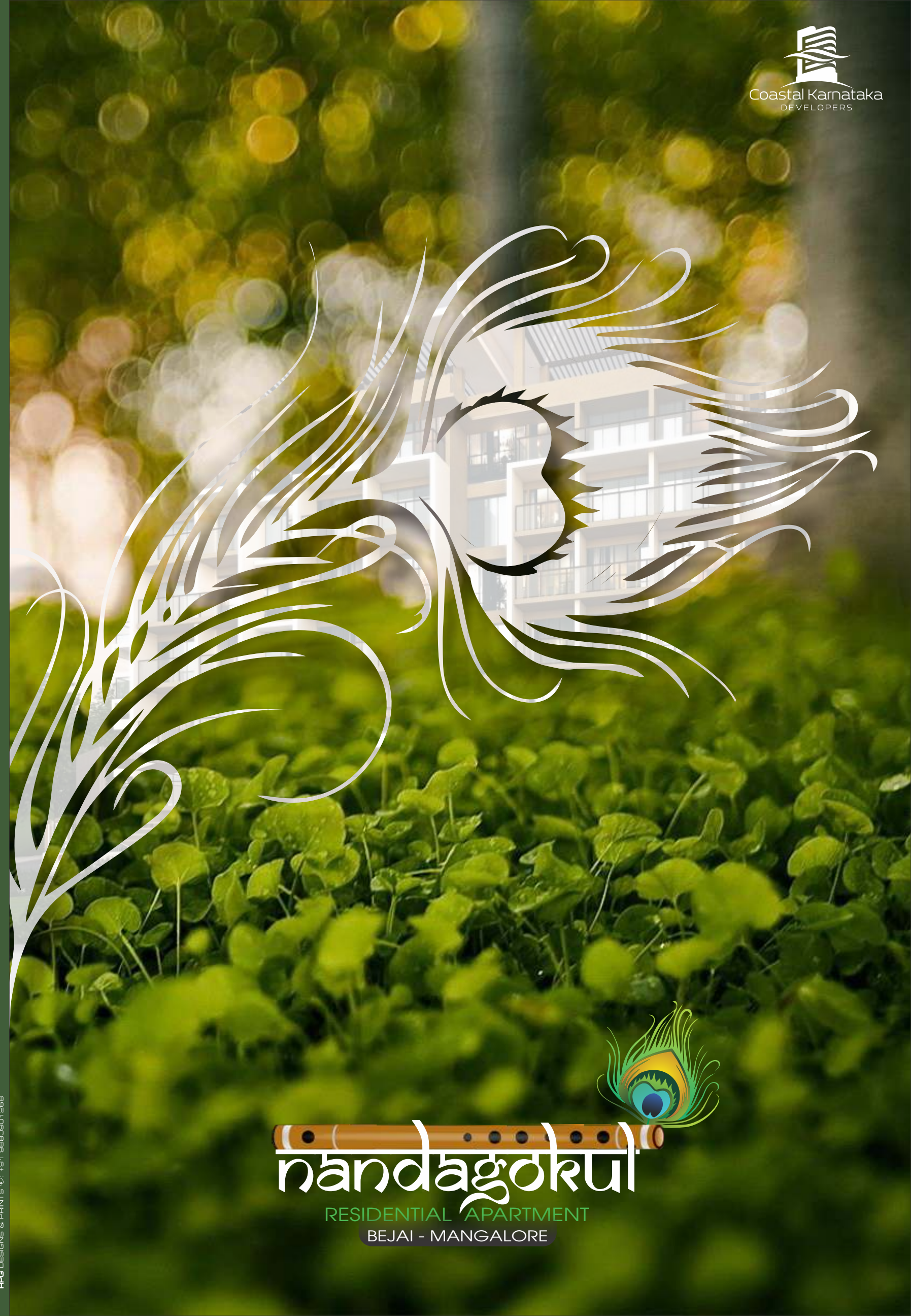
For Booking Contact:

Cell: +91 98453 53242 / Ph: +91 824 - 6066606

Web: www.nirmaanhomes.com

DISCLAIMER: THIS BROCHURE IS CONCEPTUAL AND IS NOT A LEGAL DOCUMENT. ALL MATERIALS, DIMENSIONS & DRAWINGS ARE APPROXIMATE. INFORMATION SUBJECT TO CHANGE WITHOUT NOTICE. ACTUAL USABLE FLOOR SPACE MAY VARY FROM THE STATED FLOOR PLAN. DRAWINGS NOT TO SCALE. THE DEVELOPER RESERVES THE RIGHT TO MAKE REVISIONS.

PP3 DESIGNS & PRINTS © +91 9845301268




nandagokul
RESIDENTIAL APARTMENT
BEJAI - MANGALORE



nandagokul

RESIDENTIAL APARTMENT
BEJAI - MANGALORE



You are imagining a dream city! It has the classical green surroundings while it also sports the splendid urban looks. The Magic of living in fine greenery and leading lives with modern amenities should make you delightful and joyous indeed. A fine living prospects is laid out with diverse amenities.

“Nandagokul” is no ordinary name! It symbolizes fine living architecture with all the classical greenery surrounding it. A fine living prospects with 67 Apartments at bejai kapikad cross road where nature meets and where the city meets too! Your proximity to the city, shopping, recreation everything is few minutes away. Indeed you are in a opportune landscape of infrastructure that you are as if at the central point of Mangalore City Corporation with all its destinations reaching out to you.

A M E N I T I E S



➤ JOGGING TRACK

➤ SWIMMING POOL

➤ FIRE FIGHTING SYSTEM

➤ CHILDREN PLAY AREA

➤ AIR CONDITIONED GYMNASIUM

➤ SOLAR WATER HEATER

➤ MULTI PURPOSE PARTY HALL

➤ VIDEO DOOR PHONE

➤ CCTV CAMERA

➤ WIFI CONNECTIVITY

➤ YOGA PAVILION

➤ FRUIT YIELDING TREES

➤ SOLAR LIGHTINGS

➤ LIBRARY

➤ POOL PARTY SPACE

➤ GENERATOR BACK UP

➤ INTERCOM

➤ 13 PASSENGER LIFT

➤ RETICULATED GAS CONNECTION

➤ INDOOR GAMES

➤ SPACIOUS VISITORS LOUNGE

WIFI CONNECTIVITY



CHILDREN PLAY AREA



FRUIT YIELDING TREES



LIBRARY



AIR CONDITIONED GYMNASIUM



INDOOR GAMES





TYPICAL FLOOR PLAN



AREA STATEMENT	
Flat No	Area
01	1700 Sq. ft. - 3BHK
02	1200 Sq. ft. - 2BHK
03	1025 Sq. ft. - 2BHK
04	1200 Sq. ft. - 2BHK
05	1750 Sq. ft. - 3BHK
06	1700 Sq. ft. - 3BHK
07	975 Sq. ft. - 2BHK
08	975 Sq. ft. - 2BHK
09	1350 Sq. ft. - 3BHK
10	1500 Sq. ft. - 3BHK
11	1025 Sq. ft. - 2BHK
12	1025 Sq. ft. - 2BHK



SITE PLAN



FLAT NO
04
2 BHK
1200 sqft

ENTRY



ENTRY



FLAT NO
01
3 BHK
1700 sqft

SPECIFICATIONS

DOORS & WINDOWS

- Main Door of Superior quality Hard wood with Melamine polish.
- Internal Doors of Superior quality with RCC frames & flush shutters.
- Windows made of aluminum.



PLUMBING & SANITARY FITTINGS

- Ceramic Wall Cladding up to ceiling.
- All water supply lines & drainage lines will be UPVC pipes of heavy gauge.
- All plumbing lines will be pressure tested.
- Designer sanitary ware of Hind ware or equivalent make.
- Fittings in all toilets are of Jaquar or equivalent make.
- Plumbing provision for Geyser in toilets.
- Provision for exhaust fan in toilets .
- Ground sump and over head water tank.



COMMON AREA FLOORING

- Lobbies: Granite flooring.
- Corridors: vitrified/Granite flooring.
- Staircase: Combination of Granite & Ceramic.

APARTMENT FLOORING

- Vitrified tiles for Living, Dining, Kitchen & Bedrooms.
- Non-skid Ceramic for the toilets.
- Non-skid vitrified/ ceramic tiles for balconies & utility.

KITCHEN & UTILITY

- SS Single Bowl sink with drain board on Granite counter.
- All fittings will be chrome plated of Jaquar or equivalent make.
- Wall Cladding up to 2 feet above the granite counter.
- Sufficient electrical points to accommodate all kitchen appliances.
- Aqua guard point.
- Washing machine point in utility area.
- Provision for exhaust fan.



ELECTRICAL

- MESCOM power: 3 KW for each apartment.
- All wiring shall be of Finolex / Havells or equivalent make.
- Modular electrical switches of reputed make.
- Telephone, Cable TV, broadband points in all bedrooms & living.
- Electric supply point for air-conditioners will be provided in Master bedrooms.
- Geyser points in common toilet.



CIVIL WORKS

- Reinforced Cement Concrete framed structure.
- All external walls of laterite stone with double plastering & chemical mix for water proofing.
- Internal walls of laterite stone/ concrete blocks.